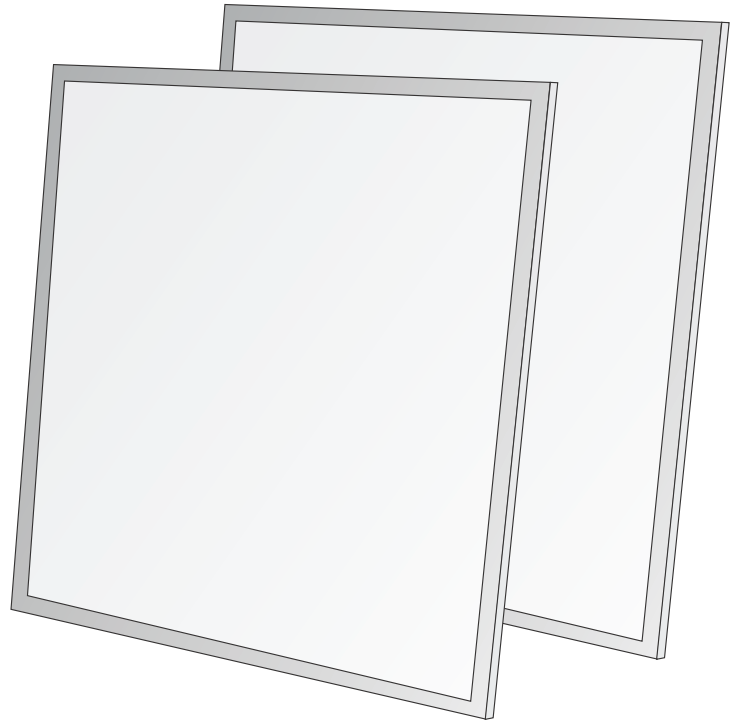


ELTO PANEL

Installation Manual



Safety Rules (Attention)

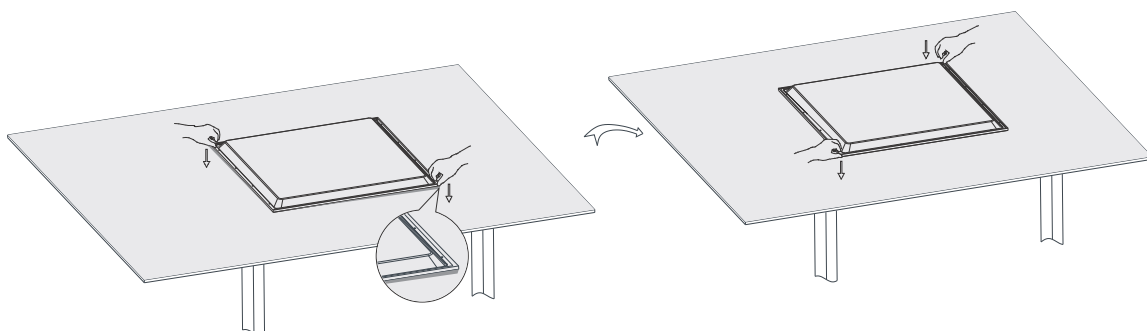
Basic safety precautions should always be followed when installing, including the following:

1. Read instructions carefully before installing.
2. ELTO Panel requires professional installation and maintenance.
3. ELTO Panel can be Non Dimmable, Phase Cut, or Dali Dimmable with the use of the appropriate external LED driver.
4. Disconnect the power supply before installing or maintenance.
5. Make sure the wires have been properly connected before powering on the device.
6. Ensure the product has enough space for heat dissipation.
7. Ensure the luminaries are never covered by any heat insulation mat or slim layer material at anytime.
8. Please refer to IP(Ingress Protection) rating of this luminaire when deciding the location of installation.
9. Ambient Temperature: -10°C to + 40°C, Avoid direct sunlight.
10. Storage Conditions: Cool & dry conditions. Safety Rules (Attention) Lamp inspection before installation:
Take out the lamp from the box and put it in a flat table, if the lamp upwarps, please adjust the lamp with below steps before installation:
 1. Press the opposite angles at the same time;
 2. Press another two opposite angles at the same time, make sure the four angles are flat, then start the installation

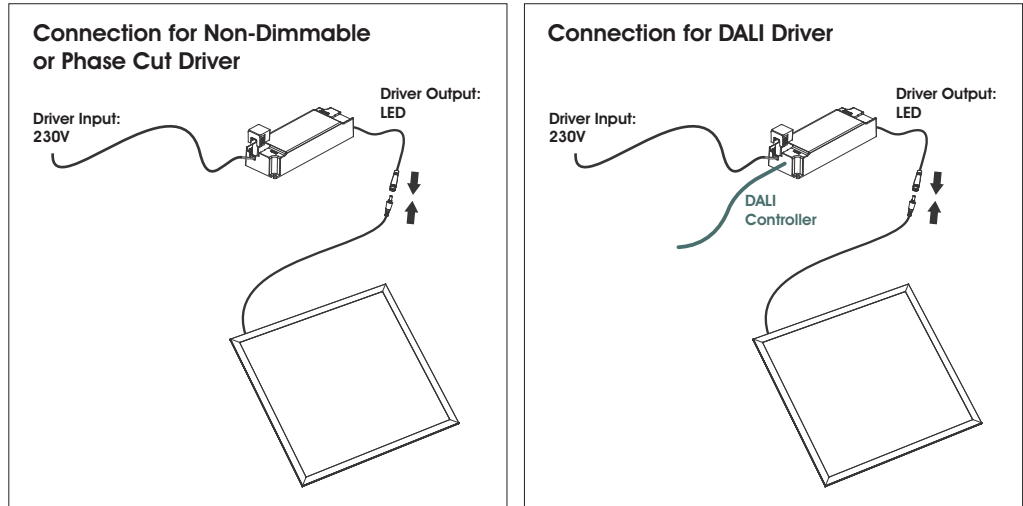
Lamp inspection before installation:

Take out the lamp from the box and put it in a flat table, if the lamp upwarps, please adjust the lamp with below steps before installation:

1. Press the opposite angles at the same time;
2. Press another two opposite angles at the same time, make sure the four angles are flat, then start the installation.

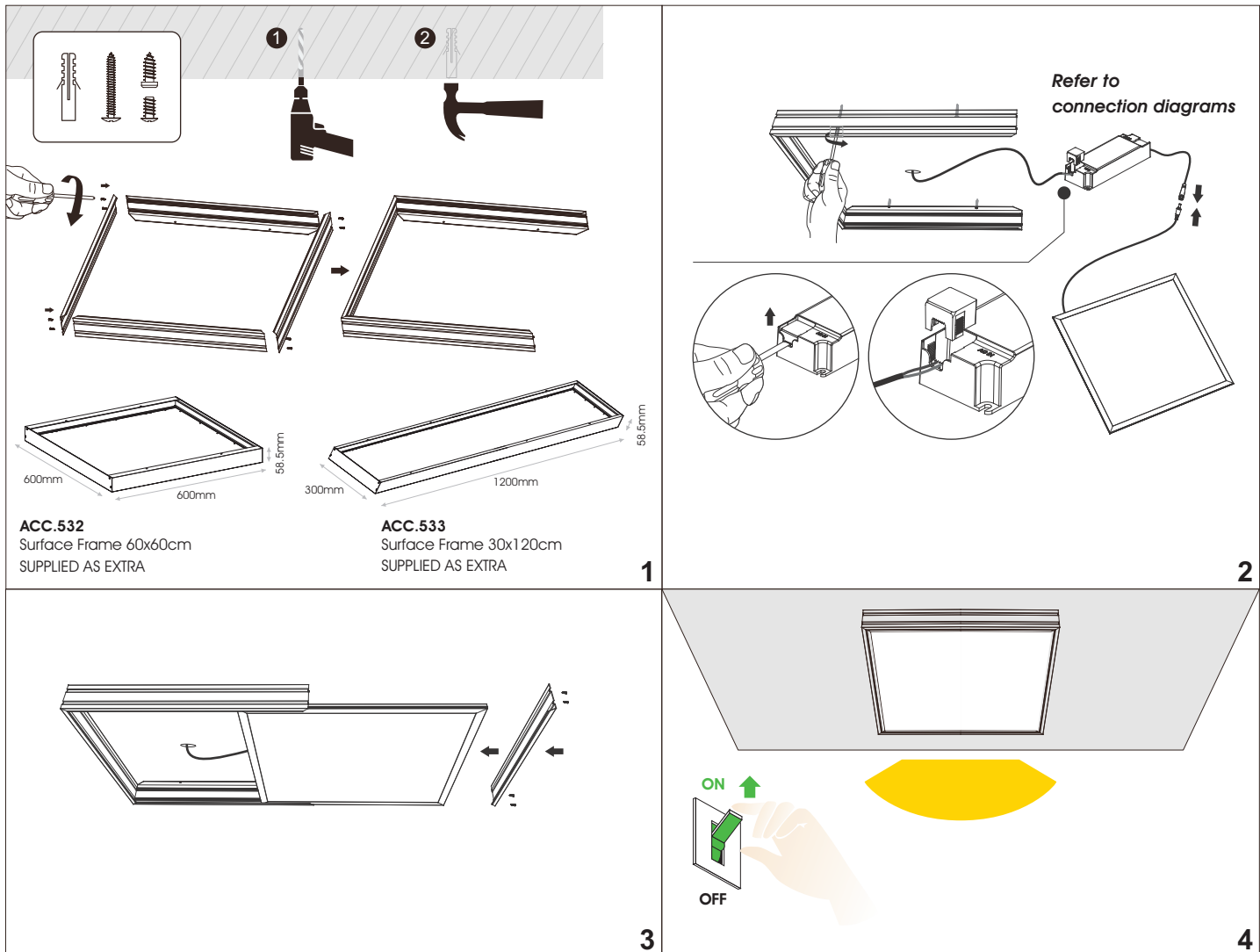
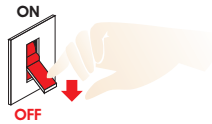


Connection Diagrams



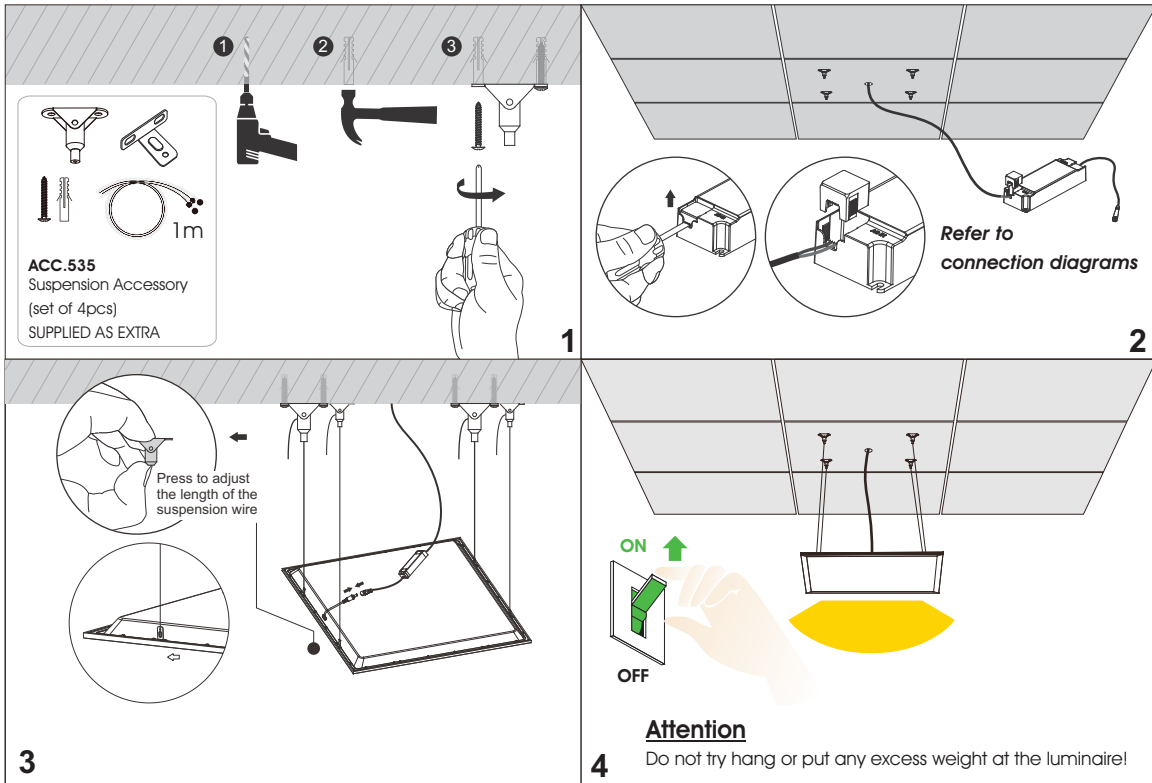
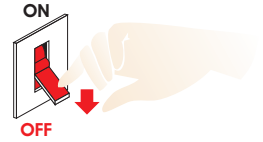
1. Surface

Attention
Switch off power at the mains.



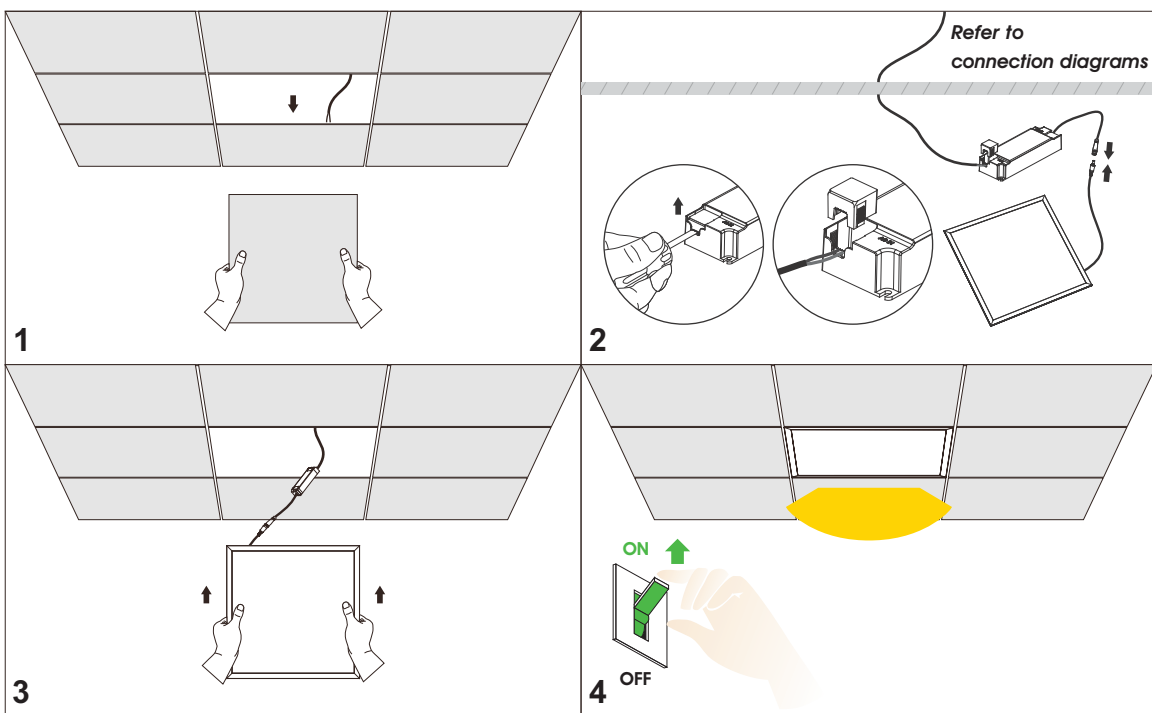
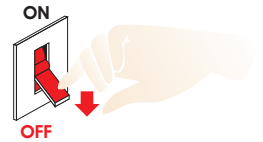
2. Pendant

Attention
Switch off power at the mains.



3. Mineral Fiber Ceiling

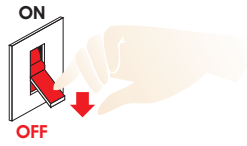
Attention
Switch off power at the mains.



4. Recessed - B Version



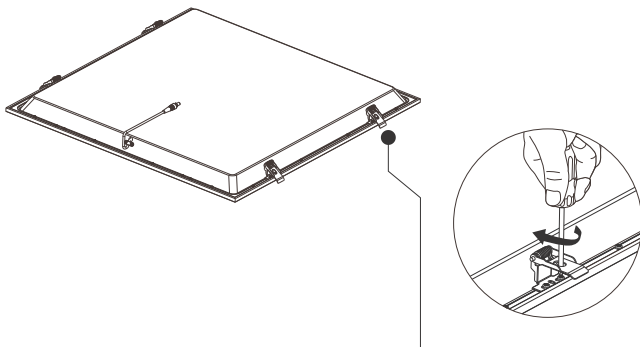
Attention
Switch off power at the mains.



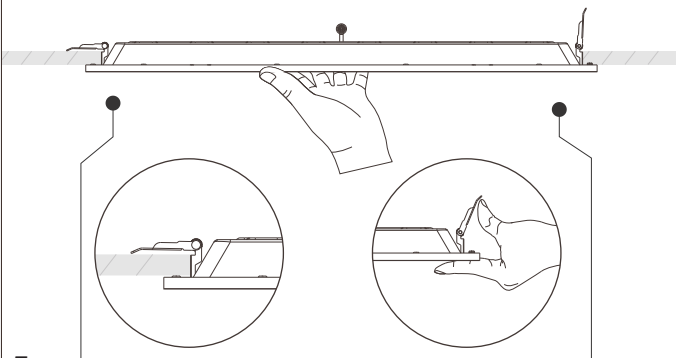
Cutout Size

Panel Size	Cutout
595x595mm	570x570mm
295x1195mm	270x1170mm

1

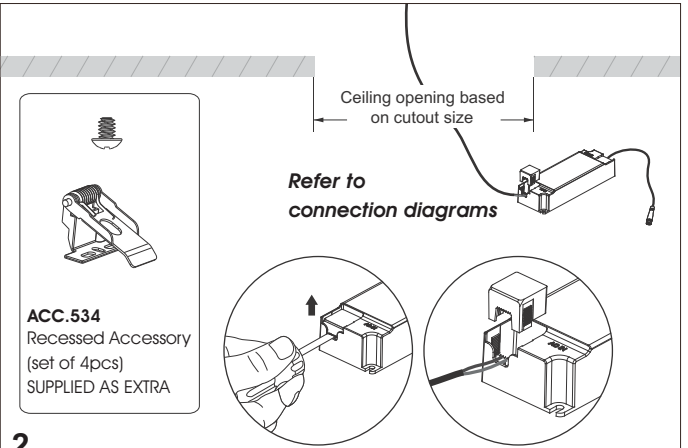


3

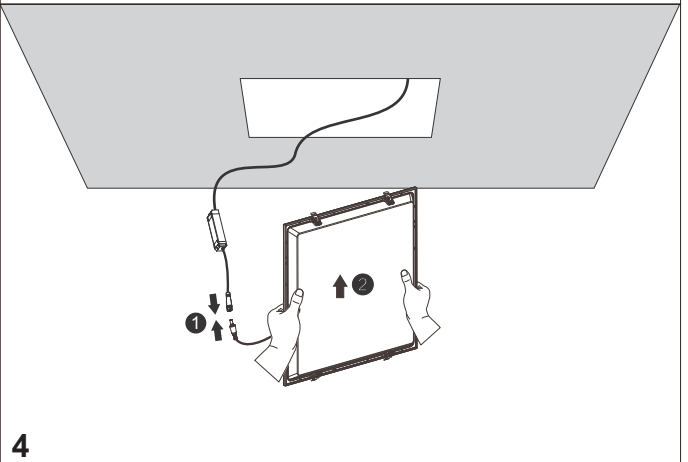


5

2



4



6

